

## **INTEGRITY DIVISION YEAR END REPORT**

The following information is based upon data obtained from 1 August 2017 to 31 July 2018.

### **SWABBING**

An important KPI for the stewards is the testing of samples from racing animals for the purposes of ensuring that no substances prohibited under the respective rules of racing are present at the time of racing.

The table below represents the total number of swabs taken during the period and the number of positive swabs.  
(Black = 2017/18, Blue = 2016/17)

<b>Thoroughbred</b>	<b>Samples</b>	<b>Positives</b>
Post Race	1987 (2082)	10 (1)
TCO2	1449 (1485)	0 (0)
OOCT	123 (169)	0 (0)
Human	244 (210)	4 (5)
<b>Harness</b>	<b>Samples</b>	<b>Positives</b>
Post Race	1658 (1764)	9 (1)
TCO2	2082 (2316)	2 (0)
OOCT	70 (144)	0 (0)
Human	121 (125)	0 (1)
<b>Greyhound</b>	<b>Samples</b>	<b>Positives</b>
Post Race	1199 (1214)	7 (0)
OOCT	37 (77)	0 (0)
<b>TOTAL</b>	<b>Samples</b>	<b>Positives</b>
Post Race	4,844 (5,060)	28 (2)
TCO2	3,531 (3,801)	2 (0)
OOCT	230 (390)	0 (0)
Human	365 (335)	4 (6)

### **CLASSIFICATION OF DETECTED SUBSTANCES**

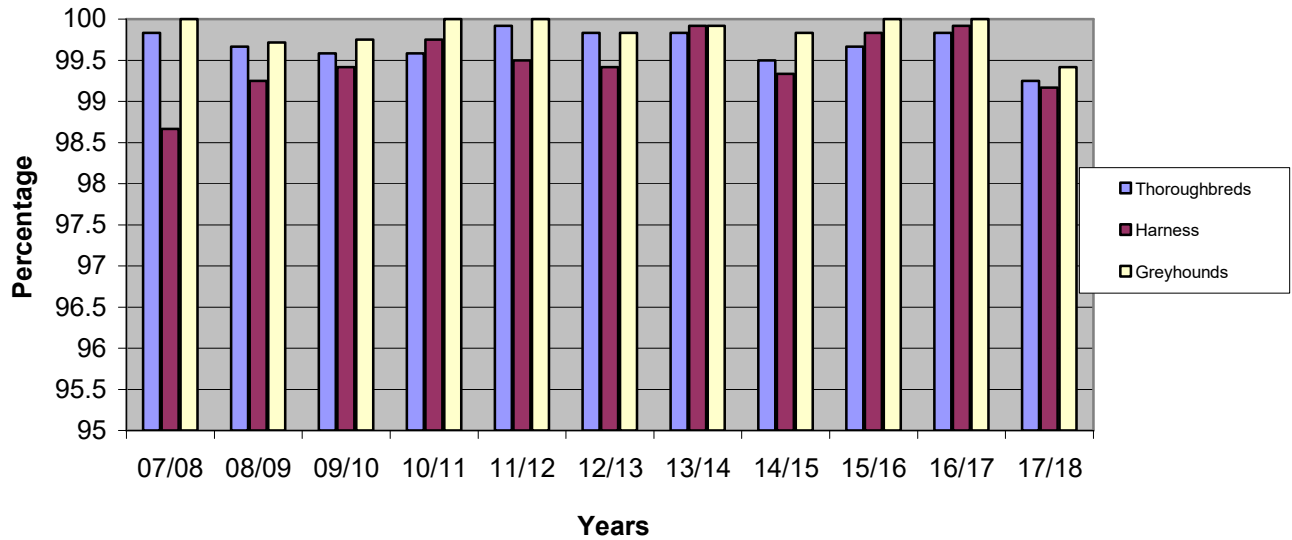
The following table distinguishes between the types of substances detected with the total number of positive swabs. A therapeutic substance is generally one which is commonly used in the training of racing animals to manage injuries or illnesses. Whilst such substances have a legitimate use in training, they are prohibited in a racing animal and therefore must be withdrawn from administration at suitable times to ensure the drug has cleared. A non-therapeutic may be performance enhancing by nature and has no therapeutic value. Other represents arsenic.

<b>CODE</b>	<b>THERAPEUTIC</b>	<b>COBALT</b>	<b>NON-THERAPEUTIC</b>	<b>TCO2</b>	<b>OTHER</b>	<b>TOTAL</b>
THOROUGHNBRED	2	1	-	-	7	10
HARNESS	1	3	2	2	5	11
GREYHOUNDS	-	5	1	n/a	1	7

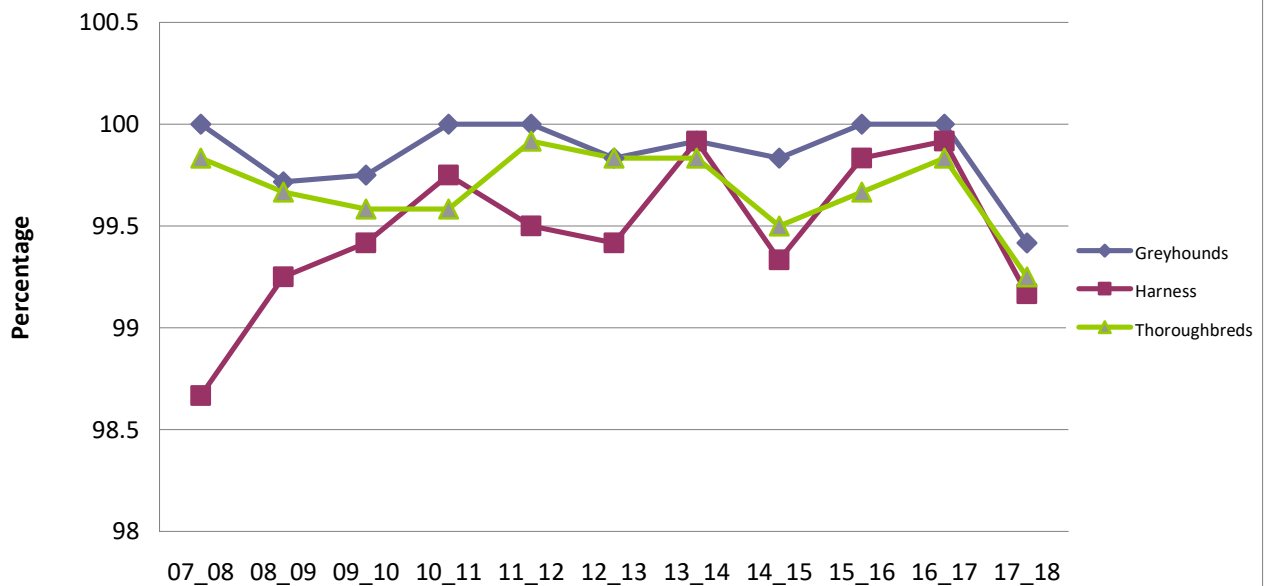
## COMPARISON

Following graphs compare previous year's results..

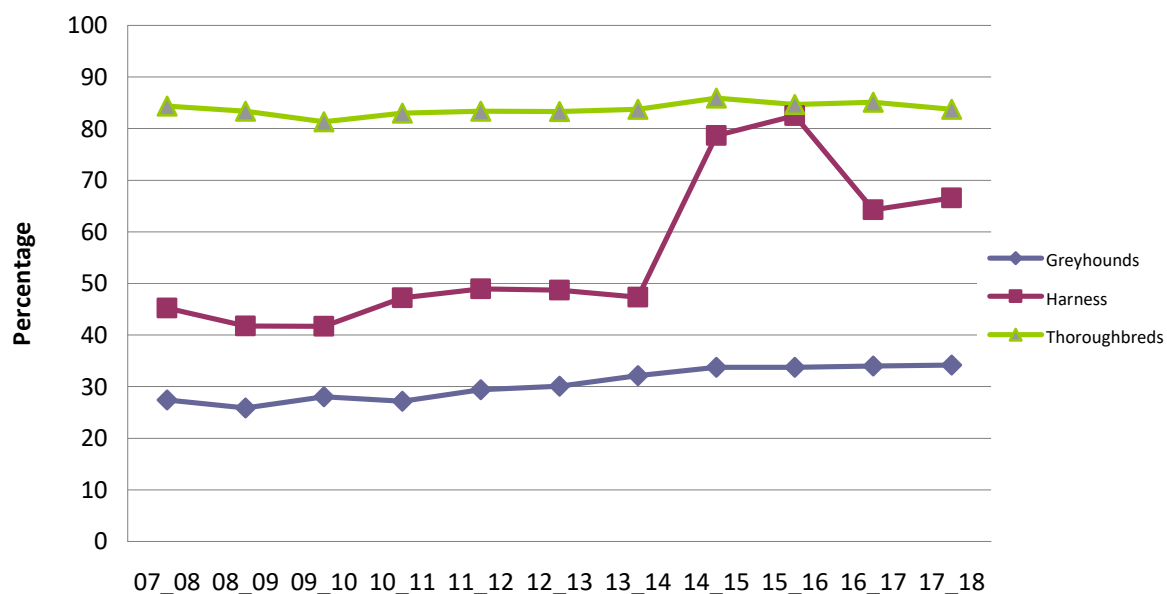
### Yearly Percentages Negative



### Average Annual KPI % negative



## Average Annual KPI % Winners Swabbed



### INQUIRIES

The following data relates to the functioning of the Major Inquiries panel, which hears and determines serious matters where significant penalty may be applied in the event of offences of the rules being found. The data does not include minor inquiries conducted by the respective code panels or race day matters such as careless driving/riding etc.

CODE	TOTAL INQUIRIES	APPEALS	DISQ.	SUSP.	FINE	REPRIMAND
THOROUGHbred	8	3	4	-	3	-
HARNESS	19	12	8	-	9	-
GREYHOUND	8	4	7	1	-	-
TOTAL	35	19	19	1	12	-

## **APPEALS**

*(Data courtesy RPAT annual report figures 2017/18)*

### **Performance Summary for 2017-18**

During the year, four appeals were carried over from 2016-17 and 19 new appeals were lodged with the Tribunal. As at 30 June 2018, the Tribunal had determined 20 appeals, including four from the previous year, with three appeals being carried over to 2018-19. These appeals, together with appeals from the previous year, are summarised by racing code:

<b>Racing Code</b>	<b>Appeals carried over to 2017-18</b>	<b>Appeals Lodged</b>	<b>Appeals Determined</b>	<b>Appeals carried over to 2018-19</b>
Thoroughbred	0	3	3	0
Harness	2	12	11	3
Greyhound	2	4	6	0
<b>TOTAL</b>	<b>4</b>	<b>19</b>	<b>20</b>	<b>3</b>

The results of the determinations in respect of the racing codes for the year 2017-18 are summarised below.

	<b>2017-18</b>		
<b>Results</b>	<b>Thoroughbred</b>	<b>Harness</b>	<b>Greyhound</b>
Allowed in Full	0	2	0
Allowed in Part (Penalty Reduced)	2	1	3
Referred Back to Stewards (RWVA)	0	1	0
Dismissed	1	6	2
Withdrawn	0	1	1
Leave to Appeal Refused	0	0	0
<b>Total</b>	<b>3</b>	<b>11</b>	<b>6</b>

<b>Appeals Carried Over to 2018-19</b>	<b>Thoroughbred</b>	<b>Harness</b>	<b>Greyhound</b>
Reserved Decision	0	1	0
Reserved Decision on penalty only	0	0	0
Reasons to be published	0	0	0
Yet to be heard	0	2	0
<b>Total</b>	<b>0</b>	<b>3</b>	<b>0</b>